



QUALITY FAUCETS AND PLUMBING PRODUCTS

SPECIFICATION SHEET

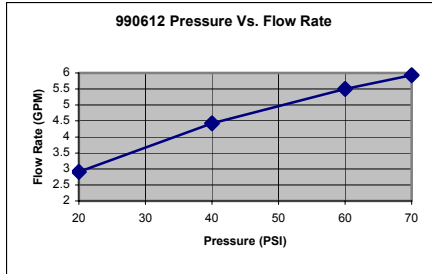
DESCRIPTION

Valve :

Combo 1/2" IPS and CxC Connections
 With or Without Stops
 Large Internal Waterways
 Washerless Cartridge
 Adjustable Temperature Stop
 Back to Back Installation
 SST Pressure Balancing Spool

Trim:

Tub and Shower Set Trim
 Metal Lever Handle
 Deco Series Brass Showerhead
 Shower Arm and Flange
 Deco Series Face Plate
 Combo 1/2" IPS/Slip-On Diverter Tub Spout
 SST Pressure Balancing Spool



990612DC-T

* ADA

FLOW

Showerhead is limited to 2.5 gpm

STANDARDS

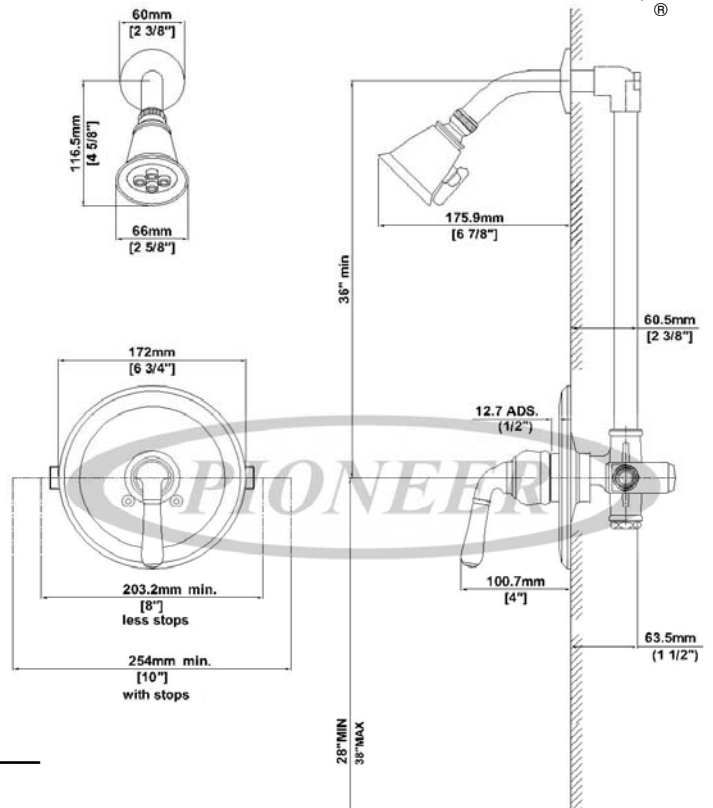
ASME A112.18.1M
 ANSI A117.1
 ANSI / NSF 61, SECTION 9
 IAPMO LISTED

PRODUCT NUMBERS

- #990612-B 1/2" IPS and CxC Inlets Valve Pack
Brass Inlet Stops
- #990622-B 1/2" IPS and CxC Inlets Valve Pack
Without Brass Inlet Stops
- #990612-T Builder Series Trim Pack

FINISHES

- BN PVD Brushed Nickel
- BP PVD Black Pearl
- CPPB Chrome w/ PVD Polished Brass Accents
- CP Chrome
- DC CP Finish with DECO Face Plate
- PB PVD Polished Brass
- PN PVD Polished Nickel



Model #: _____

Specific Features: _____

Project Name: _____

Submitted For: _____

Date: _____



DMPSP990612DC/REV. 01 2005